



2022
2023

Support local business communities



Executive Board



Ada Chen
Co-President
主席



Isabelle Yee
Co-President
主席



Frank Zhou
Treasurer
财务部长



Cynthia Fang
Secretary
秘书长

Rotorua Chinese Community of Commerce is a non-profit organisation founded in December 2014.

Our mission is to collaborate with the Rotorua Lakes Council, local business leaders and other social communities to support the business growth of our members and economic growth for Rotorua.

Our members are local Rotorua Businesses with different cultural backgrounds in various industries, including but not limited to, Tourism, Education, Finance, Accounting, Real Estate, Agriculture, Forestry, Legal, Medical, Retail, and Hospitality.

We serve our members by providing business networking activities, social events, educational seminars and workshops, and most importantly connecting people with local organisations, foreign delegates and the Chinese Embassy.

This prospectus is the introduction of our community with a welcome message to the wider public.

We look forward to working with you to grow our beautiful city of Rotorua.

罗托鲁瓦华人商会是于2014年12月成立的非盈利性组织。自从成立以来一直致力于联合罗托鲁瓦市政府，当地商业巨头和其他社会团体，支持商会会员企业的发展，并以共同为蓬勃发展罗托鲁瓦地区经济为己任。

目前，我商会已注册会员拥有着纷繁的文化背景，遍及着社会的各行各业，涉及领域主要包括：旅游、教育、金融、会计、地产、农业、林业、法律、医药、零售业以及服务业。

商会通过举办各类社交活动、公益活动、教育研讨会研习班等，服务于我们的会员。商会更为当地商业组织、国内外投资代表团和中国大使馆提供最便利、最专业的联络咨询等服务。

在此旨通过本简介让广大群众更好地了解罗托鲁瓦华人商会！

期待与魅力无限的罗托鲁瓦市共同发展！



Contact us

Phone:

Ada - 021 277 7353

Isabelle - 021 149 1815

Email: Rotccc2015@gmail.com

CONTENT

Rotorua Lakes Council	4
Rotorua's 2030 Vision	5
Rotorua Chamber of Commerce	6
ABC Business	7
AON New Zealand	8
Aorangi Peak	9
Bidfood	10
BV Sports Ltd	11
Colourful T_H Limited	12
Holland Beckett	13
ICY Chartered Accountants Ltd	14
Kitchen Beyond Ltd	15
Kiwi Seng	16
Lone Star	17
MasterMind Event Ltd	18
Ming & Sing	19
Nolan & Lu Lawyers	20
Prince's Gate	21
Oppies	22
Ray White	23
Roto Mana 2020 Ltd T-A Pacific Alpacas	24
Sichuan Style Restaurant	25
Spectrum Architects	26
The Mortgage Center Ltd	27
The Ole Schoolhouse Early Childhood Centre	28
Tikitere Hell's Gate	29
Toi Ohomai Institute of Technology	30
Westpac New Zealand Limited	31
Wonderland	32
News & Events	33



Message from
Taina Tapshell

ROTORUA LAKES COUNCIL

Te Kaunihera o ngā Roto o Rotorua

Rotorua Chinese Community of Commerce

It's a real privilege to be the Mayor of Rotorua and make a contribution to the Rotorua Chinese Community of Commerce.

I acknowledge the role that the Rotorua Chinese Community of Commerce play in supporting our wider community.

I have made it clear, that as Mayor of Rotorua, we as a Council need to be focused on our key priorities and addressing the significant challenges faced by the community.

The priorities are housing, economy, infrastructure and community, each with a set of key outcomes and founded on cultural wellbeing and respect; social wellbeing, equity and safety; economic resilience; and climate adaptation.

The priorities will guide what we will invest in over the next financial year and ensure the council organisation is set up to deliver on the areas of focus.

We welcome input from all sectors of the community and we will continue to work with many different groups and organisations to achieve what is best for our Rotorua community. Together, we can ensure that Rotorua is a better place for all.



Rotorua's 2030 vision sets an enduring pathway forward for our district and we've seen much progress in recent years.

We're a growing, as well a thriving district. Working in collaboration with the community and stakeholders, Rotorua Lakes Council is focused on ensuring our district continues to grow, prosper and progress and the focus for the next few years will be building on the district's strengths.

The Council works closely with the community through its portfolios which were established to deliver the long-term vision and goals set with input from locals.

We welcome input from all sectors of the community and work with many different groups and organisations to achieve shared goals that contribute to the district's long-term vision.

罗托鲁瓦市政府
我们在过去这几年，都有目共睹我们的区域稳步地迈向
罗托鲁瓦2030年的宏远目标。



我们的地区飞速发展前进.通过与各社区群体的通力合作，罗托鲁瓦市政府致力于地区繁荣昌盛的持续发展与进步，并且在未来的几年里加强建立地区性的优势发展. 市政府通过各个部门与各社群紧密合作，听取地方意见，一起设定了明确的长远发展目标. 我们欢迎各方的意见，与各行各业一同努力，完成大家的共同目标，并为我们地区性的长远目标作贡献。

Rotorua's 2030 Vision 罗托鲁瓦市2030年的宏远目标

This is our home.
We are its people.
We're the heart of Maori culture and expression.
We're innovative and we share what we learn.
We're driving opportunity, enterprise and diversity.
We're supporting a legacy of sustainability for our environment.
Rotorua is a place for everyone. Tatau tatau – We together.

这是我们的家园。
我们是这里的居民。
我们是毛利精神文化中心。
我们勇于创新，分享我们的学习成果。
我们驾驭着机遇，有进取心和多元化。
我们支持并不为余力地做好环境保护。
罗托鲁瓦是我们每一个人的家园。Tatau tatau（毛利语）– 我们齐心协力

Help us to shape Rotorua. Go to letstalk.rotorualakescouncil.nz to have input into important planning, projects and decision-making and register to stay up-to-date with Council matters

请协助我们共同发展罗托鲁瓦。请把您的想法和意见通过 以下网页告诉我们 letstalk.rotorualakescouncil.nz，这有助于市政府重要的 城市规划，方案安排和策略制定。另外，您也可以关注到市政府最新的动向。



罗托鲁瓦商会



Established in 1908, the Rotorua Chamber of Commerce is the district's leading business organisation and is an affiliate member of the New Zealand Chambers of Commerce.

The Rotorua Chamber of Commerce works with all business organisations and agencies by providing advocacy, support services and networking towards building a better business environment in its city.

Membership is open to all Rotorua businesses or enterprises of any size.

From small and medium sized enterprises to major Rotorua based companies, the Rotorua Chamber incorporates every aspect of the Rotorua business sector.

The Rotorua Chamber of Commerce is one of 30 within New Zealand. The current membership is about 500 businesses, representing a large cross-section of business owners and employers in the Rotorua region.



The Chamber is funded from membership, sponsorship and the delivery of business support services and contracts. We have a collaborative relationship with the NZ Chamber of Commerce.

The Chamber works closely with the Economic Development Unit of the Rotorua District Council to attract businesses to the Rotorua region and to keep them here. The Chamber provides its members with services and programmes that assist them to grow. The Chamber is a focal point to facilitate interaction across the community's businesses and to provide increased awareness of the diversity of the business environment.

罗托鲁瓦商会建立于1908年，是本地区商业组织的先驱者，也是新西兰总商会的会员之一。商会与各大商业团体机构通力合作，为会员们争取权益，提供各种服务，搭建平台，并为创建更好的商业环境而努力。

欢迎所有的罗托鲁瓦商家加入商会，我们没有企业规模的限制。

大部分罗托鲁瓦企业都属于中小型规模。商会处处为大小会员们着想，谋福利。罗托鲁瓦商会是30个新西兰商会之一，现有500位会员，他们代表罗托鲁瓦地区的各行各业的商家

和雇主。商会的经费来自会员的会费，资金赞助和提供其他有偿商业服务的收入。

我们与新西兰总商会有互助互利的合作关系。同时，商会与罗托鲁瓦市的经济发部紧密合作，为吸引更多的企业在本地区落地生根不遗余力，为各会员的成长发展出谋划策，并竭力为罗托鲁瓦地区的各行各业发展和建立多元化的商业环境作贡献。

Contact us

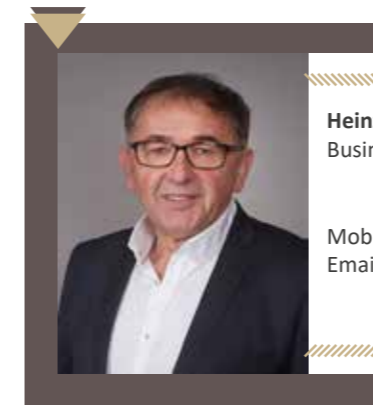
Phone: 07-346 3657
Email: info@rotorua-chamber.co.nz
Address: 1192 Hinemoa Street,
Rotorua 3010
Post: PO Box 385, Rotorua 3040



WHY ABC?

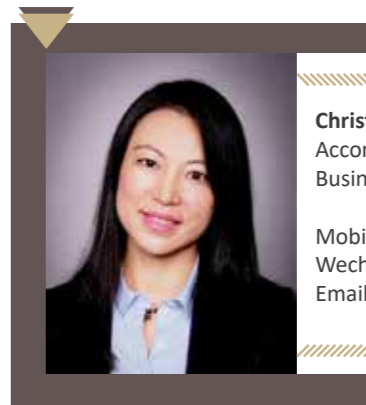
为何选择ABC做为您的商业买卖顾问?

- | | |
|---|--|
| 1. Established in 1986, makes it the longest serving business broker in New Zealand. | 1. ABC 成立于1986年，是新西兰运营时间最长的商业经纪公司 |
| 2. Specialised and focused on Small and Medium-sized enterprises (SME) which covers business sized from \$0.1m to \$20m. | 2. 专为中小企业 (SME) 提供商业买卖服务，企业规模从价值10万到2千万不等 |
| 3. Database of 50,000 SME business owners / advisors. | 3. 有超过5万中小企业的数据库 |
| 4. Offices in the following locations: Northland, Auckland, Waikato, Bay of Plenty, Rotorua, Hawkes Bay, Manawatu, Wellington, Nelson, Canterbury, Queenstown, Otago. | 4. 公司在北地，奥克兰，怀卡托，丰盛湾，罗托鲁瓦，霍克斯湾，玛纳瓦图，惠灵顿，尼尔森，坎特伯雷，皇后镇和奥塔哥都设有办事处 |
| 5. National network of 70+ business brokers; proven business systems & processes. | 5. 全新西兰有超过70个商业买卖经纪人，提供覆盖全国的成熟商业业务系统和专业的商业买卖交易流程 |
| 6. Multi-lingual brokers fluent in a range of languages. | 6. 公司旗下的商业买卖经纪提供多种语言服务 |
| 7. Successful sales in excess of 400 businesses annually. | 7. 每年全公司成功销售超过400家的企业 |
| 8. Experienced head office functions including Legal / Finance / IT Systems / Marketing / Admin and Operations. | 8. 公司总部聘请经验丰富的专业人士提供法律，财务，信息系统，市场营销和行政等支持性服务 |



Heinz Fett
Business Broker

Mobile: 0275 707 601
Email: HeinzF@accbusiness.co.nz



Christine Chen
Accommodation Specialist/
Business Broker

Mobile: 022 3171350
Wechat: xfsk8888
Email: christinec@abcbusiness.co.nz

Rotorua / Taupo office
Address: 204 Arawa Street, Rotorua 3010

“Be secure in the knowledge that Aon only transacts in business with leading insurance companies, who have strong financial security and superior claims paying abilities.”

“为使客户安心，怡安只与拥有强大的经济实力及优越索赔偿还能力的保险公司合作。”

Geoff Blampied, CEO, Aon NZ
行政总裁·怡安新西兰
我们在这里为您服务

Aon New Zealand is the leading provider of insurance broking, risk management and associated services both in New Zealand and globally. Through access to New Zealand's largest and most trusted insurers, Aon designs and places insurance for individuals, small and medium businesses, corporate business and rural.

Our experienced brokers pride themselves on understanding their client's needs to provide an extensive range of broking and financial services at a local, regional, national and global level. We continually invest in our professional talent, technology and the development of specialised products to serve our clients in all major industry groups.



怡安新西兰是新西兰本土，同时也是全球范围的领先保险经纪公司。提供的服务包括：保险经纪、风险管理、及相关领域的服务。怡安与新西兰国内规模最大以及最受信任的保险公司紧密合作，为个人、中小型企业、企业以及农业提供合适的保险产品 及设计风险计划。

我们经验丰富的保险经纪人在充分理解我们客户所需的前提下，在各个不同层面为不同地区地域全国范围、乃至全球的客户 提供全面的保险经纪服务及金融服务，并引以为自豪。我们在培养优秀人才、增进电讯科技及研发各类特殊产品方面从未停止投放资源以更好的服务于不同产业的客户。

通过怡安经纪人作为您的代表与各保险公司沟通，从而达到为您节省时间、金钱、以及帮助您能够充分理解各类复杂的保险 契约。我们有资质的专业的保险经纪人均致力于在理解您个人 和商业的所需的基础上，为您量身订做，提供一个经济、合理、有效的解决方案。怡安的理赔专家竭诚在什么时候为您服务，无论您的索赔案件是大、是小。

通过我们的专业服务，我们为您设计出风险管理及保险方案，可以保护您的财产、分担责任风险及节省保费支出。

Aon brokers act as your independent advocate to insurers, negotiating on your behalf to save you time, money and the worry arising from navigating and understanding complex insurance contracts. Our qualified, insurance specialists are committed to understanding your unique personal and business needs and provide a pragmatic solution to fit your requirements – giving you appropriate cover at competitive prices. Aon's dedicated claims service assists you at all times; no matter how big or small your claim is.

Through our professional service, we create risk management and insurance solutions that protect your assets, safeguard liabilities and minimise your total insurance cost.

Contact us

Office | Tel: 07 343 5180

Judy White

DDI: 07 343 5182

Mobile: 0274 959226

Email: judy.white@aon.com

Anaru Macrae

DDI: 07 343 5184

Mobile: 0272 390399

Email: anaru.macrae@aon.com



Aorangi Peak is Located at the highest point of Mt. Ngongotaha, Aorangi Peak Restaurant is the oldest and most iconic restaurant in Rotorua.

Breathe-taking view and award-winning cuisine has made us popular and become the "Must Visit" tourists attraction in Rotorua.

白云峰山顶景观餐厅坐落在罗托鲁瓦(Rotorua) 依格塔哈山(Mt Ngongotaha)山顶。是本地历史最悠久的地标餐厅。

壮丽雅致的自然美景及连续六年荣获新西兰牛羊肉金奖，令我们成为游客们到罗托鲁瓦的“必游”景点。



We specialize in hosting events, conferences and all kinds of functions. Distinguished guests may also land here with helicopter.

5-Star Resort, Winery and Theme Park are the upcoming projects in Aorangi Peak that will excite and sparkle in tourism industry.

We look forward to welcoming you for a memorable time.

餐厅包办各种宴会，户外拥有大型停车场及直升机停靠台即将开展的项目包括5 星级度假酒店，酒庄和主题公园 我们期待着您的到来。



Contact us

Phone: (+64) 07 3470036

Fax: (+64) 07 3460571

Email: info@aorangipeak.co.nz

Address: 353C Mountain Rd, Rotorua



BIDFOOD is a national wholesale food distributor made up of four divisions: Foodservice, Fresh, Logistics and Butchery. Together, all divisions provide the foodservice and hospitality industry with a complete range of food and non-food products. Linking the distribution of 20,000+ products to over 15,000 customers. BIDFOOD can service commercial food businesses of all sizes, from a small cafe through to the largest national businesses in New Zealand. Rotorua branch offers daily deliveries around Rotorua CBD and wider region, we pride ourselves on offering a comprehensive range to our customer base, with the back up of a friendly service team.

BIDFOOD 是新西兰全国主要食品供应商之一，由四个部分组成：食品服务，生鲜食品，分销货运，高档肉类。向餐饮业提供食品或非食品类，销售种类超过20,000个餐饮产品到全国各地15,000个客户。

BIDFOOD 服务于各种规模的商业食品交易，从小型的咖啡店到全国大型连锁。BIDFOOD Rotorua 分部提供该市区及周边地区的运输服务。我们的团队能够为客户提供优秀和全面的服务而倍感自豪。



For further information
欲知更多详情，请预览
<http://www.bidfood.co.nz>



Bob and Vivian are the owners Stirling Sports Rotorua. They have been in New Zealand over 10 years. Bob and Vivian are always passionate about sports products. They purchased Stirling Sports Rotorua in 2021. Their goal is to keep our standards consistently high with proactive customer service, premium products, a superior experience in store and an extensive range of new and upcoming brands that will be sure to impress.

Stirling Sports Rotorua has you covered when it comes to all the latest sneakers, lifestyle apparel, training gear and accessories. Stirling Sports is host to the worlds most loved and on trend brands. hand-picked collections from adidas, Nike, Champion, Tommy Hilfiger, and more. Where the fashion meets sports!



Contact us
Hours: Open daily
Phone: (07) 348 0396
Address: 1277 Tutaneikai Street,
Rotorua 3010



罗托鲁瓦本地花店
Rotorua Local Florist
Living Colour Florist & Gifts

我们是罗托鲁瓦的本地花店和礼品店。位于1197 Eruera Street, Rotorua。同时我们是INTERFLORA的成员之一，可以派送罗托鲁瓦的任何地址，并且可以帮您寄送鲜花到新西兰以及全世界的任何地方！

我们可以定制适合各种场合的鲜花，例婚礼、葬礼、纪念日、生日、新生儿礼物、各项派对活动和公司商务花盆等等。

Living Colour Florist & Gifts是花卉设计专家，随时可为您私人定制现代、前卫、古典、传统等各项活动花卉。

我们随时可以帮到您，也欢迎到店里咨询。

We are a Locally Based Rotorua Florist, situated at 1197 Eruera Street since 2006.

Living Colour Florist & Gifts is a member of INTERFLORA, ready to deliver flowers in Rotorua, throughout New Zealand and around the World.

Flowers for all occasions, wedding, anniversaries, birthdays, baby gifts, funerals, events and corporate.

We are specialists in floral design ready to create, modern, contemporary, avant-garde or classical arrangement for your special occasion.

We are happy to help you and always welcome to the shop.

Contact us

Hours: Mon - Fri, 9am - 5pm
 Phone: (+64) 07-349 2288
 Email: sales@livingcolour.co.nz
 Website: https://livingcolour.co.nz
 Address: Windsor Building
 1197 Eruera Street, Rotorua 3010
 Time: 07-349 2288



HOLLAND BECKETT
LAW



Holland Beckett Law 是罗托鲁瓦当地的一家律师事务所，我们的业务遍及丰盛湾——我们在陶朗加、罗托鲁瓦、法卡塔尼、陶波和奥波蒂基都设有分部。我们的律师提供广泛的专业领域服务：包括房地产（住宅和商业）、公司和金融交易、遗产规划和管理、环境和资源管理、地方和公司治理、就业、争议解决、健康和安、家庭和关系财产以及继承和信托等毛利法律事务。

我们以协助我们的客户和社区、满足他们的法律和个人需求、帮助他们实现目标并在困难情况下指导和支持他们而感到自豪。我们致力于为社区服务，支持当地团体、组织和活动。

James McDougall 是负责罗托鲁瓦办事处的公司合伙人。罗托鲁瓦办事处有 17 名员工，在过去几年稳步增长。所有员工都是当地人，我们都致力于帮助罗托鲁瓦的企业主取得成功。

Holland Beckett Law is a local Rotorua law firm with a Bay of Plenty wide reach – we have offices in Tauranga, Rotorua, Whakatane, Taupo and Opotiki. Our lawyers have expertise in a broad range of areas, including property (residential and commercial), corporate and financial transactions, estate planning and administration, environmental and resource management, local and corporate governance, employment, dispute resolution, health & safety, family and relationship property as well as Maori law matters such as succession and trusts.

We take pride in assisting our clients and community with their legal and personal needs, helping them achieve their goals and guiding and supporting them through challenging situations. We are committed to serving our community, supporting local groups, organisations and events.

Partner James McDougall leads the Rotorua office. There are 17 staff members based here and we have grown steadily over the last few years. Our staff are all locals and we are committed to helping Rotorua business owners achieve success.



James McDougall

Nicola.Brazendale

Contact us

Email: James.McDougall@hobec.co.nz
 Nicola.Brazendale@hobec.co.nz
 Web: https://hobec.co.nz
 Address: Holland Beckett Law
 1072 Haupapa Street
 Rotorua 3010



Isabelle Yee is a Chartered Accountant with over 10 years' experience, working in various accounting practices throughout the Bay of Plenty. She graduated from Victoria University of Wellington in 2006 and has a degree in Bachelor of Commerce and Administration majoring in Accounting.

In 2020 Isabelle formed her own practice; I.C.Y Chartered Accountant Limited. Isabelle prides herself on being honest, having a high standard of work, and doing the best for her clients.

Isabelle believes that servicing her community is important. She has been on the executive board to a Not-For-Profit organisation "The Rotorua Chinese Community of Commerce" since 2015. Isabelle is currently the Co-President and continues working with other local professionals to provide support to members.

In her spare time she enjoys reading, running, biking in the Redwoods, and spending time with family.

No matter what size your business is and which industry you are in, our professional business advice can assist you to make informed financial decisions. If you are looking for an accountant who is client-focused and can provide tailored solutions for your business, I.C.Y. can help.

Please contact us to discuss your required accounting services.



Isabelle Yee

Accounting Services

- Bookkeeping
- Budgeting
- Cashflow forecasting
- Management accounting
- Payroll Services
- Accounting Software solutions
- Accounting Software training

Business Advisory Services

- Business start-up
- Buying/Selling of a Business
- Company administration
- Financial Reporting
- Rental property

Taxation

- FBT
- GST
- Income Tax
- PAYE
- RWT

Isabelle Yee 是一名注册会计师，拥有超过10年的经验，在丰湾从事各种会计工作。她于2006年毕业于惠灵顿维多利亚大学，并获得会计学专业的商业和行政学学士学位。2020年，Isabelle成立了自己的事务所；I.C.Y 注册会计师事务所。

Isabelle 以自己的诚实、高标准的工作和为客户做最好的努力而自豪。

Isabelle认为，为她的社区提供的服务很重要，并给了她自己的业余时间义务去帮助罗托鲁瓦的一些慈善组织。在她的业余时间，她喜欢阅读，跑步，在红杉骑自行车，和家人在一起。

无论您的业务规模有多大，您在哪个行业，我们的专业商业建议都可以帮助您做出明智的财务决策。如果你正在寻找一个以客户为中心的会计师，并且能够为你的业务提供量身定制的解决方案，I.C.Y.可以提供帮助。请联系我们，讨论您所需的会计服务。

If you want to understand more of your business financial situation and how to improve moving forward, make a step forward and contact us.

Contact us

Hours: Mon - Fri 8.30AM – 3.00PM
Sat - Sun Closed
Phone: 021 149 1815
Email: Info@icyca.co.nz
Web: www.icyca.co.nz
Post: PO Box 12093, Rotorua 3045, New Zealand



Kitchen Beyond 位于罗托鲁瓦，成立于2021年。专业从事各类房屋的厨房设计、生产及安装，业务覆盖整个丰盛湾和怀卡托地区。公司拥有成套现代化的生产设备，和一批高素质技术管理人才及经验丰富的工作人员，选用符合新西兰标准的优质环保材料，五金配件均选用德国知名品牌产品，同时注重新产品的研发，不断推出新工艺、新款式。

公司成立以来“设计以人为本、生产以质量为先、服务以客户为重”一直是企业发展的行为准则。公司将以全新的角度诠释现代厨房的功能结构布局和色彩搭配，制造出和谐统一有独具品味的生活厨房。

Kitchen Beyond 您的私人橱柜管家。懂家，懂你，懂生活！

Kitchen Beyond Limited is located in Rotorua specialising in kitchen design, renovation, and manufacturing of high quality custom kitchens.

A focus on custom-design allows us, and our experienced and talented kitchen designers and sales to work with you and listen to your needs so as to create your ideal kitchen design renovation which will suit your lifestyle and personal taste, thus creating the centrepiece of your home.

We share the belief that a kitchen should be a reflection of its owners and our meticulously-designed and crafted kitchens are created with high professional standard and truly functional design in mind.

We offer custom-designed and manufactured kitchens, cabinetry, laundries and bathrooms in the Bay of Plenty and Waikato regions. Complete project management is also a unique service that Kitchen Beyond is able to provide for our customers, ensuring your kitchen renovation is fully taken care of.



Contact us

Phone: (07) 2626 056
Mobil: 022-111 2203
Email: info@kitchenbeyond.co.nz
Web: www.kitchenbeyond.co.nz
Address: 17 White Street, Fenton Park, Rotorua 3010



KiwiSeng grows, produces and sells the premium New Zealand wild-grown ginseng.

Our Certified Organic ginseng is grown in the NZ pristine environments, pure and clean pine forests on mountain slopes, and careful handling ensures Healthy soils, Healthy ginseng and Healthy people.

Backed by scientific research, our ginseng has been approved to have at least 100% more of the health-improving ginsenosides than the average of Asian ginseng from China and Korea.

We supply a variety of natural and top quality ginseng products to several countries. Our most popular products are Dried Ginseng, Red Ginseng, Ginseng Leaf Tea, Ginseng Honey Lozenges, Ginseng Extract, Ginseng Capsules and Ginseng Wine.

We also provide ginseng seeds and ginseng seedlings for anyone interested in growing quality ginseng in New Zealand.



KiwiSeng 专注于新西兰最高品质人参的培植。

我们拥有世界上唯一获得多国“有机认证”的林下人参种植基地。科学证明，KiwiSeng 人参的活性人参皂苷含量是其他产地的一倍以上。

产品包括：原支人参、原支红参、参茶、参蜜含片、参胶囊、参酒等。所有产品“新西兰国家优质品质银蕨认证”，澳新最高食品加工安全规范认证及 HACCP 认证。

从种植、采挖、加工、包装到经销，每道工序都极其考究，一丝不苟。源于自然，守护全人类的健康，是 KiwiSeng 不懈努力的追求。

Contact us

Tel: +64 (07) 350 2288
 Mobile: +64 21 2861 168
 NZ Free: 0800 861 168
 Email: sales@kgl.co.nz
 Web: www.KiwiSeng.com
 Address: 49 Sala Street, Rotorua,
 Post: PO Box 12046, Rotorua South



A MUST SEE
网红景点

With all that hydrogen sulphide permeating the air, it's often said you can smell Rotorua before you see it, but that's part of this wonderful city's charm. After all, it is the cultural capital of New Zealand.

The Lone Star is proud to be regarded as a "must-see" attraction in Rotorua – and we've just relocated! We're no longer back-street, we're main- street, right beside Eat Street, close to the Village Green, and the Novotel and Ibis hotels.

Including our outdoor dining area, we can comfortably host up to 190 guests. In addition, we can cater for a further 80 guests in our private function room – whatever the occasion, we'd love to host you – simply give us a call, tell us what you require and we'll take care of the rest.



这里空气中弥漫着硫化氢，人们常说，在看到罗托鲁瓦市之前，您就能闻到它的味道，这正是这座美妙城市魅力的一部分。毕竟它是新西兰的文化之都。

Lone Star 餐厅很荣幸被称为罗托鲁瓦的网红景点之一。我们刚刚搬迁到著名的 Eat Street 拐角处，邻近 Village Green 以及 Novotel 和 Ibis 酒店。

包括户外用餐区，我们的餐厅最多可以接待 190 多位客人。此外，我们的私人宴会厅可以容纳 80 位客人。我们非常乐意为您作不同的活动安排。您只需打电话告诉我们您的要求，我们的团队会安排好一切。

Contact us

Lone Star Rotorua
 Phone: (07) 349 4040
 Email: manager@lonestar.co.nz
 Address: 1/1182 Whakaue Street,
 Rotorua 3010



Mastermind Events are a local based company here in the Bay of Plenty.

Whatever the occasion, from a single balloon gift, balloon bouquet or beautiful balloon arches and table decoration for that extra special occasion, you can rely on us.

We have a wide range of equipment available for rental to make your event fun. Whether it's an indoor party or an outdoor event, we always have everything you need for your event



MasterMind Event



Mastermind Events是一家位于Bay of Plenty 的本地公司。

无论什么场合，从一个单独的气球礼物，气球花束或美丽的气球拱门和桌子装饰为那个特别的场合，你可以信赖我们。

我们有各种各样的设备可供出租，使您的活动有趣。无论是室内聚会还是室外活动，我们总是为您提供您需要的一切。

Contact us

Phone: 021 118 6708
 Email: info@mastermindnz.com
 Web: www.mastermindnz.com
 FB: Mastermindeventnz
 IG: mastermindeventnz



Ming & Sing Asian Cuisine is located in Central Mall on Amohau Street Rotorua. The Cuisine is not only specialized in traditional Chinese dishes but also European food. Ming who is the owner has been running the business in the food industry for years. He is very passionate about food and has created various delicious Chinese and European dishes which attracts lots of regular customers. Ming & Sing Asian Cuisine has built up its good reputation through the years and will continue to provide high quality food for customers.



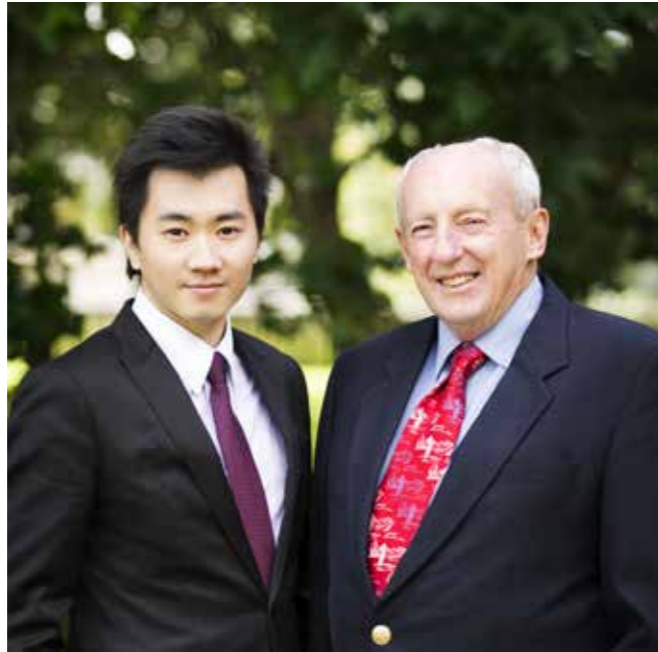
众所周知，一个从事饮食行业的成功企业，无不依仗众多食客的捧场和拥戴。更需要企业自身具有有效的管理以及能够制作出让大众喜闻乐见的产品。

目前我公司地处罗托鲁瓦市区中心，有店面两个。它们分别经营和制作中式餐饮和西式餐饮。经过了数十载的摸索经营，不断完善，现企业已拥有可产出数十款物美价廉的中西式餐饮的能力。与此同时，更坐拥一众人的忠实食客，其令本企业得以可持续发展至今，这些全有赖各方的支持和帮助。

我们愿意在未来的日子里，竭尽棉力，用以优质和可口的美食去服务于社会大众。

Contact us

Phone: (07) 350 3188
 Address: Rotorua Central,
 Tutanekei Street, Rotorua 3010



The firm of Anthony J. Nolan was first established in October 1991 and in 2016 became Nolan & Lu Lawyers providing legal services in:

- Property and Commercial Law;
- Probate and Estate Administration;
- Trusts;
- Bankruptcy and Liquidation;
- Immigration;
- Civil Litigation.

The Professional Team at Nolan & Lu Lawyers comprises of 5 lawyers and 2 legal executives dedicated to providing the best legal services to clients. The team is a multicultural one and have professionals who can provide you with tailor-made legal services in your language, including:

- English;
- Mandarin; and
- Cantonese.

Nolan & Lu Lawyers 法律事務所在1991年10月成立於漢彌爾頓市中心。為客戶提供專業法律服務於以下領域:

- 土地法;
- 商業投資;
- 移民法;
- 公司法;
- 民事訴訟與爭端處理。

本所的法律團隊現有五位出庭及業務律師(Barristers & Solicitors)以及兩位法律專務人員。我們相信律師及客戶之間必須存在著最有效的溝通才能達成最有效的法律代表或辯護。因此，我們客戶的語言提供新西蘭法律服務，包括普通話（中文）以及粵語。



Contact us

Phone: (+64) 7 834 0365
Level 4 Sentinel House,
586 Victoria Street,
Hamilton Central
Hamilton 3204



Oppies is not just your regular fish and chips shop even though it began as one. In the last 18 years, under Michael's leadership, Oppies has successfully combined healthy food with great taste and excellent quality to produce amazing quality and selection from this unique takeaway shop.

OPPIES 由著名企业家，新西兰华人 Michael 先生创办，坐落于新西兰北岛温泉之乡 ROTORUA，是一家集新西兰文化与中国餐饮为一体的特色饭店。



At Oppies, you can now eat fish and chips or Chinese takeaways with less of the guilt because Oppies' uses Rice Bran Oil and only the very best and freshest of ingredients.

The menu caters for Kiwi taste buds but without the unwanted fatty, greasy taste one would expect from a takeaway shop. If you want the original Chinese food, Oppies has even got an unadulterated Chinese restaurant style menu.

With Cantonese Roast Pork with the signature crispy skin, Char Siew pork, Roast Duck with shiny skin and moist, succulent flesh, lamb chops with spices and a whole selection of amazing and delectable Chinese dishes, Oppies is definitely more than just fish and chips.

Delivery 送餐服务:

- * From \$5.00 - \$10.00 (city area), minimum of \$20.00 order, **cash only**
- * 起价 \$5.00 - \$10.00 (市区), 最低消费 \$20.00, **只限现金.**

随着现代人对餐饮界的更高要求，健康饮食必将成为现代餐饮的主角。在过去的18年里，OPPIES 致力于打破传统，张扬个性，炮制独特内涵。OPPIES使用的米糠油健康营养，与其他的上等新鲜原材料搭配，绘制出一场永不落幕的饕餮盛宴。

招牌广东脆皮烤猪肉，叉烧肉味美多汁；烤鸭光泽温润；烤羊排香味绕梁，更多惊奇美味的菜肴刺激着每一个洋人及远方来客的味蕾。

在这里，您不仅可以享用到具有当地特色的炸鱼和薯条，而且还有名厨烹调纯粹的私家中式菜肴等待您的光临。

随着现代人对餐饮界的更高要求，健康饮食必将成为现代餐饮的主角。在过去的18年里，OPPIES 致力于打破传统，张扬个性，炮制独特内涵。OPPIES使用的米糠油健康营养，与其他的上等新鲜原材料搭配，绘制出一场永不落幕的饕餮盛宴。

招牌广东脆皮烤猪肉，叉烧肉味美多汁；烤鸭光泽温润；烤羊排香味绕梁，更多惊奇美味的菜肴刺激着每一个洋人及远方来客的味蕾。

在这里，您不仅可以享用到具有当地特色的炸鱼和薯条，而且还有名厨烹调纯粹的私家中式菜肴等待您的光临。

OPPIES 周边交通便利，基础设施丰富。中心购物商场，各大超市，加油站，豪华宾馆坐落周边。青山环绕，文化蕴藏，让您在享受美食的同时又能身心得到熏陶。

Contact us

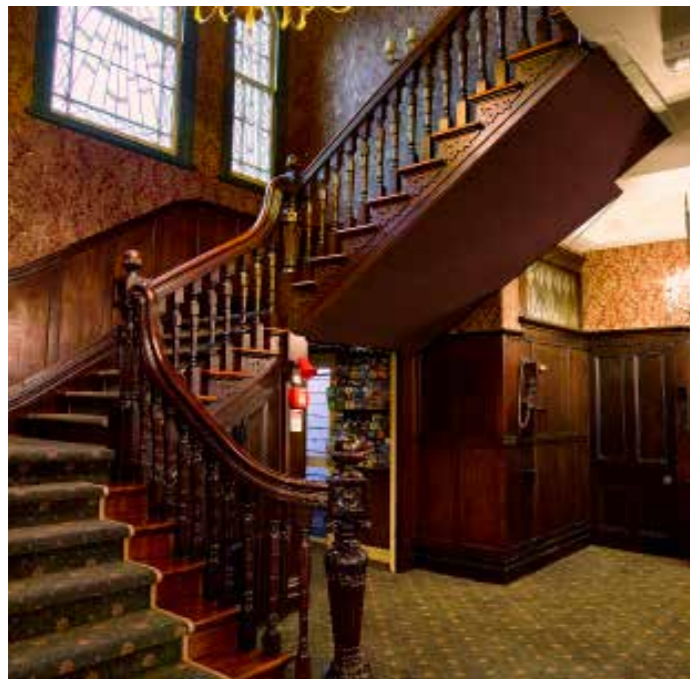
Phone: (07) 347 1909
Address: 259 Fenton Street,
Victoria, Rotorua 3010
(Corner Fenton St. & Malfroy Rd.)
Opeing Hour: 11am-9pm
Web: www.oppies.co.nz



王子之门精品酒店始建于1897年，作为罗托鲁瓦市中心的地标酒店，距离市政府花园仅20米，步行3分钟即可到达世界十大温泉之一的波利尼西亚温泉，是您探访罗托鲁瓦的最佳下榻处。

酒店共有50间客房，客房设计集古典高雅韵味和时尚格调于一身。桑拿房和天然地热温泉池，帮您放松旅途的疲惫。公爵酒吧&餐厅为您提供从早餐到晚餐的多种餐饮服务，餐厅装修延续百年前贵族风格，置身其中品尝一流新西兰美食，妙不可言。

在这里，您做一回时间的旅行者，感受19世纪浓浓的历史感和酒店延续120年的好客精神，让过往的新西兰再次生动起来



Prince's Gate Hotel is proud to offer the very best in New Zealand hospitality and comfort. The hotel is located in the heart of this geothermal city and Maori cultural centre and just a stone's throw away from the famous Government Gardens, the lakeside and the city center. Our Qualmark 4.5 star hotel offers a perfect retreat from which to explore and enjoy this wonderland of adventure and indigenous activities.



Contact us
 Victor Hao | Acting General Manager
 Email: victor.hao@princesgate.co.nz

 Cynthia Fang | Marketing and Events Manager
 cynthia.fang@princesgate.co.nz



Ray White Rotorua is a proud real estate office, providing service to property owners throughout Rotorua and surrounding areas. Ray White Rotorua was established in February 2012 (Amtos Realty Services Limited) from the passionate belief, enthusiasm and determination of a team of experienced and successful real estate practitioners. Today Ray White Rotorua is proudly owned by Tim & Jacqueline O'Sullivan and Anita & Paul Martelli. Together they have developed a team that is committed to each and every client that engages the agency. Ray White Rotorua has a long tradition of excellence in delivering outstanding results. As part of Ray White, our office is able to provide access to a broad network of offices throughout New Zealand and internationally and also provide a high level of media and online marketing.



Ray White Rotorua是澳大利亚知名连锁房地产销售集团位于Rotorua的分公司。Ray White Rotorua向Rotorua及周边地区物业业主提供专业房产销售服务。Ray White Rotorua 成立于2012年2月由数位怀着热忱信念，充满激情和决心并有着丰富销售经验和非凡成就的房产销售精英建立。目前Ray White Rotorua由 Tim & Jacqueline O' Sullivan 和 Anita & Paul Martelli 共同经营及所有。在他们的努力下，Ray White Rotorua的团队致力于在每一天为每一位客户提供专业的房产销售服务。Ray White Rotorua的传统优势便是多年来不断向客户提供卓越解决方案的能力。作为Ray White集团的一部分，我们在Rotorua的分公司可以帮客户更好利用Ray White集团遍布于新西兰和国际市场的高质量线上线下营销资源，更好与新西兰和国际市场对接。

Contact us
 Phone: (07) 348 8333
 Email: rotorua.nz@raywhite.com
 Address: 1239 Amohia Street, Rotorua 3010
 Post: PO Box 693, Rotorua 3010



www.pacificalpacos.com has found in 2021 in Auckland, research, sales and promotion base in Rotorua, New Zealand.

We do focus on collecting the quality alpaca fibre from New Zealand Alpaca farmers, research and development the luxury duvets, ski jackets and alpaca fibre premium products and fashion.

More than 600 alpaca farms in New Zealand have been cooperating with us over 20 years, getting the best of best quality fibre and deep cleaning by organic processing, we have been set up the unique supply chain.

Pacific Alpaca has been gathering, processing 70% of the New Zealand alpaca fibre each year, turn it into quality products for high-end market in China, Canada, Japan, New Zealand, for luxury accommodation and families who have been enjoying the life-style with quality.

With special molecule cleaning technology of spring water, the alpaca fibre been through six deep clean by seven tanks, become to the unique natural duvet fibre.

The pattern on our duvet is designed by famous Maori designer, the inspiration is come from the Pounamu (Green Stone, Mountain Jade) of Southern Alps. Pacific Alpaca is member of International Alpaca Associations, has NZ Grown and NZ Made certificates.

The company adheres to the concept of harmonious development with nature, pure alpaca fibre, we do concern our products that are sustainable, biodegradable and strictly in line with ecological standards.

We focus on quality as number one issue, Pacific Alpaca provides high standard products for better life-style.



Pacific Alpacas, 2001年成立于新西兰奥克兰, 研发销售设立在罗托鲁亚。

专注羊驼纤维收集, 主营羊驼被、羊驼雪地服等产品的制造和研发。与超过600家的新西兰羊驼农场联盟, 千人万次的优化, 形成高效稳定的供应链系统。

经过Pacific Alpacas收集加工的羊驼纤维, 每年占新西兰整个羊驼纤维市场份额的70%。

公司掌握了泉水小分子净洗技术, 羊驼纤维均经7缸6次深度净洗, 形成了Pacific Alpacas羊驼被, 与众不同的自然气息的产品, 提供中国, 加拿大, 日本, 新西兰等高端市场。

Pacific Alpacas羊驼被的图案设计, 由毛利著名设计师Patricia创作完成, 灵感来自南阿尔卑斯玉石形状。Pacific Alpacas是国际羊驼协会会员, 产品获得新西兰NZ Grown和NZ Made双重认证。

公司秉承与自然和谐发展的理念, 用天然羊驼纤维, 制造可持续发展、可生物降解, 严格符合生态标准的产品。

匠心铸造顶级臻品, Pacific Alpacas让您生活更加美好!

Contact us
 WeChat/WhatsApp/Phone
 Phone: (+64) 21 747768
 Web: www.pacificalpacos.com
 Email: rotomana2020@gmail.com
 james@pacificalpaca.com
 hutao@pacificalpaca.com



重庆味道川菜食府位于哈密尔顿24号 身居闹市交通方便, 装修雅致。由特级川菜烹饪厨师温建带领多位川菜名厨组成, 共同体现高超川菜手艺的新西兰正宗川菜食府(风味凉菜, 特色炒菜, 各特小吃)。是新西兰川菜酒楼中的佼佼者。重庆味道每道菜式每款器皿, 每个环境都体现了巴蜀的饮食文化。让在NZ的川菜美食爱好者感受到川土, 川人, 川味, 川情的巴蜀风情。烹饪中体现出川菜“一菜一格, 百菜百味”的风格。主要体现在原料不同, 味道不同, 烹饪方法不同, 牵花围边不同, 器皿不同, 营养不同六个方面, 讲究色, 香, 味, 形, 器, 美, 养等要素的和谐和统一。

罗托鲁瓦店隆重推出正宗川味火锅, 清汤锅底, 鸳鸯锅底, 麻辣九宫格, 任您选择。每日6: pm--9:pm 正宗炭火烧烤。

宗旨: 做出来的好味道, 吃出来的好心情. 国以民为本, 民以食为天, 食以味为先, 味以适为珍。

The first Sichuan Style Restaurant was opened in 2010 in Hamilton downtown. Executive Chef Mr Wen brought in authentic Sichuan Style food from China to New Zealand. All dishes are cooked with special spice and presented in traditional Sichuan Style.

In addition, Rotorua branch was opened in 2015. The exclusive dishes are hot pots and Chinese BBQ on hot plates with mild and spicy flavour from 6PM to 9PM daily.

【重庆味道】
老百姓讲述自己的味道, 品你千遍也不厌倦。

Contact us
 Phone: (07)347 1661
 Web: www.sichuanstyle.co.nz
 Address: 1260-1262 Eruera Street,
 Rotorua 3010



Spectrum Architects are a new firm that has evolved from long established local practices. Spectrum have, in a short time, developed a significant solid client list that has grown entirely from reputation and word of mouth recommendations.

Attention to details and client needs is a corner stone of this success, coupled to a pragmatic and enlightened approach to design and construction costs.

Spectrum seek to produce beautiful, efficient, functional, economical, and practical design solutions.

The name Spectrum was chosen to reflect the broad range of services that the practice offers, so as to ensure that your project runs smoothly - and our approach to the environment through sustainability, low energy, long life, minimal waste, carbon locking projects all tied to a wood first preference - and the fact that Spectrum have experience across a wide range of projects from obtaining COAs for non consented building work, through modest upgrades, and new homes, to cafés, bars, shops, offices, apartments, hotels to multi-million dollar commercial projects.

Spectrum 建筑设计师是一建新成立的公司，它是从长期建立的本地实践发展而来的。Spectrum 在短时间内开发了一个重要的可靠客户名单，完全来自声誉和口碑推荐。

对细节和客户需求的关注是公司成功的基石，再加上务实和开明的设计和施工成本方法。频谱寻求生产美丽，高效，功能，经济，和实用的设计解决方案。

Spectrum 的名称选择是反映广泛的服务，以确保您的项目运行顺利，我们的方法通过可持续性，低能源，寿命长，最小的浪费，碳锁定项目与木材优先偏好，频谱经验在广泛的项目获得非建筑工作，通过适度的升级，和新住宅，咖啡馆、酒吧、商店、办公室、公寓、酒店到数百万美元的商业项目。

Contact us

Roger Willard
Phone: 021 445 677
Email: roger@spectrumarchitects.nz
Address: 105 Koutu Road,
Kawaha Point, Rotorua



'Welcome to The Mortgage Centre. Dedicated to your specific needs, our team can provide a full range of mortgage services. Covering Rotorua and surrounding districts, our experience and knowledge covers all home loans, new home construction, investment and commercial property loans and refinancing or restructuring. We come out to you anywhere in NZ providing a FREE consultation. So call us today to get started or find out more about our mortgage and insurance services.'

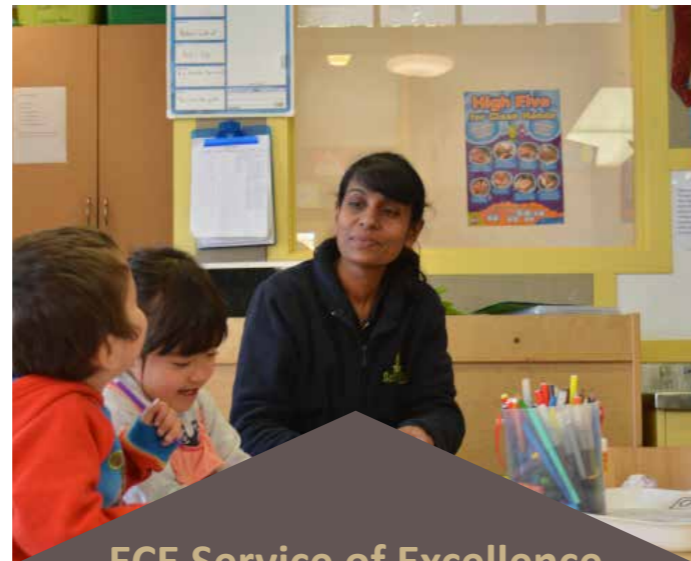
'大家好，我们很荣幸加入罗托鲁瓦华人商会。The Mortgage Centre 多年来服务 Rotorua, Bay of Plenty, 以及新西兰各地，提供各项贷款服务及咨询。范围包括房贷，建筑贷款，投资和商务贷款，以及各种债务整合和调整。我们和各大新西兰银行和金融机构合作。给客户的服务大多是免费。'



如果您想咨询更多信息请点击我们的网站
www.themortgagecentre.co.nz

Contact us

Jenny Zhou | Praveen Bhati
Mobile: 021 254 9994 | Mobile: 027 457 3709
Email: jenny@themortgagecentre.co.nz | Email: praveen@themortgagecentre.co.nz
Address: 1188D Whakaue St, Rotorua



ECE Service of Excellence
我们学校有幼教早卓越的服务!



我们不单是一个幼教学院，也是一间热心照顾所有儿童和专门培养幼儿教育，激发，创新，质量和乐趣的发展。为孩子们预备未来的旅程。

我们密切的和家属们合作，共协之下，和家长们沟通还有和在线沟通方式，关于孩子的发展和状况。我们的目标是让所有的孩子在学习起步能有最好的开始。我们老师们是以充满着爱心的，还有都是专业幼教学位的资格教育孩子。

三至五岁，拥有二十小时免费。我们工商会会员有两周的免费课程!

The Ole Schoolhouse is not just a childcare centre; it is a place where all children in our care are involved in educational, stimulating, creative, quality and fun programs that will equip them for their life's journey.

We work in close harmony and collaboration with our families in their child's development by keeping them informed through our online portal. Our aim is to give all our Children the best possible start in life. We do this by having caring, loving teachers who are qualified and exceptional in the field of Childcare.

The Ole Schoolhouse offers Free ECE for 3, 4 and 5 year old children and daily fee charges are reduced when you sign up for Free ECE.



To join our wait list for coming year
欢迎登记候补学位

Contact us

Email: admin@oleschoolhouse.co.nz
 Address: 15 Toko Street, Victoria, Rotorua 3010
 Website: www.oleschoolhouse.co.nz



Hell's Gate Geothermal Reserve & Mud Spa
"Where the centre of the earth meets the sky."
地狱之门地热保护区&火山泥温泉



Experience New Zealand's only Mud Spa complex situated in the middle of a geothermal reserve! Witness the healing properties of the geothermal Muds and Waters used by local Maori for over 800 years. Relax the mind body and soul by lathering the warm mud over your skin in New Zealand's only mud bath. All Rotorua is known for can be found at one exciting location.



感受来自地球深处的巨大能量

Hell's Gate "地狱之门" 是罗托鲁瓦最活跃的地热保护区。园区内拥有丰富的地热景观，热气腾腾的喷气孔和热浪翻滚的泥浆池，喷气孔、热水湖、硫磺晶体和沉淀物随处可见。游客还可以沿着古代毛利战士走过的步道漫步于保护区内，欣赏到南半球最大的热水瀑布——卡卡西瀑布 (Kakahi Falls)。



体验古法火山泥温泉之美

Hell's Gate "地狱之门" 拥有新西兰唯一的地热泥浆浴池，任何一个人都会错过罗托鲁瓦最出名的火山泥温泉。当地的毛利人民很早便熟知地热泥和地热水的这些功效，并在欧洲移民抵达时又发现了其治愈病痛的功效。现在，游客可以在古老的泥浆池中享受泥浆浴，将温热的泥浆敷满全身，渐渐感觉到皮肤的紧绷，根本不用等到泥浆完全干燥，就可以洗去泥浆，再跳进直接来自地热的温泉池。紧绷的皮肤在温热的泉水中变得湿润光滑，全身每个毛孔都舒畅起来。晨曦中，在"仙气"和天然温泉的怀抱中沐浴，醉人醉心；夜幕下，透过灌木仰望闪烁繁星点缀的天空，轻闭双眸，尽情享受浸泡温泉所带来的舒适与惬意。



Contact us

Phone: +64 (07) 3453151
 Email: info@hellsgate.co.nz
 Web: www.hellsgate.co.nz
 Address: 351 State Highway 30, Tikitere, Rotorua, New Zealand

Kia ora and welcome to

TOI-OHOMAI
Institute of Technology | New Zealand
新西兰国立中部理工学院



Our name, **Toi Ohomai**, represents our vision to aim high and achieve great heights - to be awakened by learning.

Our five main campuses are located throughout the beautiful Bay of Plenty and South Waikato, home to arguably New Zealand's best beaches, lakes, mountains and thermal wonderland.

We have more than 20 extra delivery sites dotted across our region and over 150 programmes to choose from. All of this makes it easy for approximately 12,000 students to study with us every year. Students can choose programmes across all levels - from certificates, diplomas and degrees to postgraduate studies.

With specialties in business, information technology, creative arts, engineering, forestry, hospitality, environmental science, nursing, health care, tourism, freight logistics, construction and even more, we are confident you will find something here to inspire you.

We are also part of Te Pūkenga - New Zealand Institute of Skills and Technology, the 35th largest tertiary provider in the world. Te Pūkenga is gradually bringing all New Zealand vocational education providers together to collaborate and create even better opportunities for our students.

So join us for your learning journey and discover your true potential!



Toi Ohomai 这个毛利语校名体现了我们的美好愿景：高瞻远瞩，成就非凡。

我们的五个主校区坐落在美丽的丰盛湾和怀卡托南，这里坐拥新西兰最好的沙滩、湖泊、山脉和温泉胜地，另有二十多个授课点。在校学生数超过一万两千名。教授涵盖证书至硕士的一百五十多种课程，专业方向包含旅游、商务、创造艺术、工程、林业、餐饮、海洋科学、护理、医疗、建筑、货运物流等等。我们相信你会在这里寻得可以激发你潜力的课程。

我院也是 Te Pūkenga - New Zealand Institute of Skills and Technology 的成员，这是全球第三十五大高等教育机构。Te Pūkenga 正逐步将新西兰职业教育机构联合起来，共同合作为学生创造更好的机会。

加入我们的学习之旅，让我们唤醒你的潜能！



Westpac have been part of New Zealand, supporting individuals, families and businesses, for over 154 years. We're committed to this country's well-being and growth, meeting challenges and providing practical support everywhere, all the time.

Westpac has a long history of working with and supporting local communities and businesses throughout New Zealand. It's our way of giving back. Aligning with our strategic business objectives, our focus is to provide support that contributes to New Zealand's economic, social and environmental well-being.

We value business excellence in all fields, and we recognise the importance of a dynamic and vibrant business community. Through our sponsorship of the Rotorua Chinese Community of Commerce, we are proud to support a like minded dynamic and vibrant organisation.

The Commercial Banking team in Rotorua are committed to giving the local business community the confidence to grow. Above and beyond the sponsorship of the Rotorua Chinese Community of Commerce, we have a team of passionate and diverse individuals who are here to help.

Westpac would like to congratulate the Rotorua Chinese Community of Commerce with their success to date and for taking the initiative to help drive the Rotorua Business Community to greater success in the future.



Westpac-西太平洋银行在新西兰已有154年历史，服务新西兰的人民，家庭和商业。我们立志于发展国家经济，尽所能为新西兰各地人民在任何时间提供帮助。

我们已发展新西兰经济和回报社会为目标，一直以来坚持扶持新西兰各地企业和社团。

西太平洋银行对各地商业社团对当地经济所作出的贡献高度重视，并积极合作及给予帮助。罗托鲁瓦华人商会就是一个例子。

西太平洋银行企业部的各位成员包括罗托鲁瓦华人商会财务部长Frank Zhou (西太平洋银行企业部经理)，立志于帮助当地企业，为经济发展建立信心。

我们衷心的感谢罗托鲁瓦华人商会对当地经济发展做出的贡献，也坚信他们会取得更多优异的成绩。

Contact us

罗托鲁瓦校区 Rotorua (Mokoia Campus)
Mokoia Drive, Rotorua, New Zealand
Private Bag 3028, Rotorua 3046, New Zealand
Phone: +64 (07) 346 8712

陶朗加校区 Tauranga (Windermere Campus)
70 Windermere Drive, Tauranga, New Zealand
Private Bag 12001, Tauranga 3143, New Zealand
Phone: +64 (07) 557 8993

Email: international.enquiries@toiohoma.ac.nz
www.toiohoma.ac.nz

Contact us

Phone: (07) 349 5446
Address: 1228 Amohau Street, Rotorua 3010



Reap the rewards of your investment, without the stress, time, nor demand of management.

Wonderland Holiday homes look after all bookings, contact with guests, enquiries, and more. We have our own team of cleaners readily available to clean up after every guest to make sure that your property will be spotless and ready for the next. We also offer staging to make your property stand out from the rest, and gain the potential to increase your nightly return.

收获投资的回报，替您分担时间和管理的压力。

仙境名宿管理公司负责所有预订、与客人联系、咨询等工作。请让我们来完成所有的管理运营，您无需为此花费时间和精力就能有所收获。

我们有自己的清洁团队随时为每位客人提供清洁服务，以确保您的财产一尘不染，并为下一次清洁做好准备。同时，我们提供度假屋风格设计服务，使您的度假屋脱颖而出，并获得增加回报的潜力。



Contact us

Phoenix Fan | Toni Tang
 Mobile: 0224731268 | Mobile: 021 777 149
 Email: wonderlandpropertyserVICeltd@gmail.com



Thank you

to all members making contributions to join and support every event.
 感谢所有为参与和支持每一个活动做出贡献的成员。

- 2021 CNY Celebration
- Chinese Fashion Show
- AGM Meeting
- Harrcourt Dancing for Hospice
- Chinese Fashion Show
- Hygiene and Safety Workshop
- 2022 Virtual CNY Celebration

